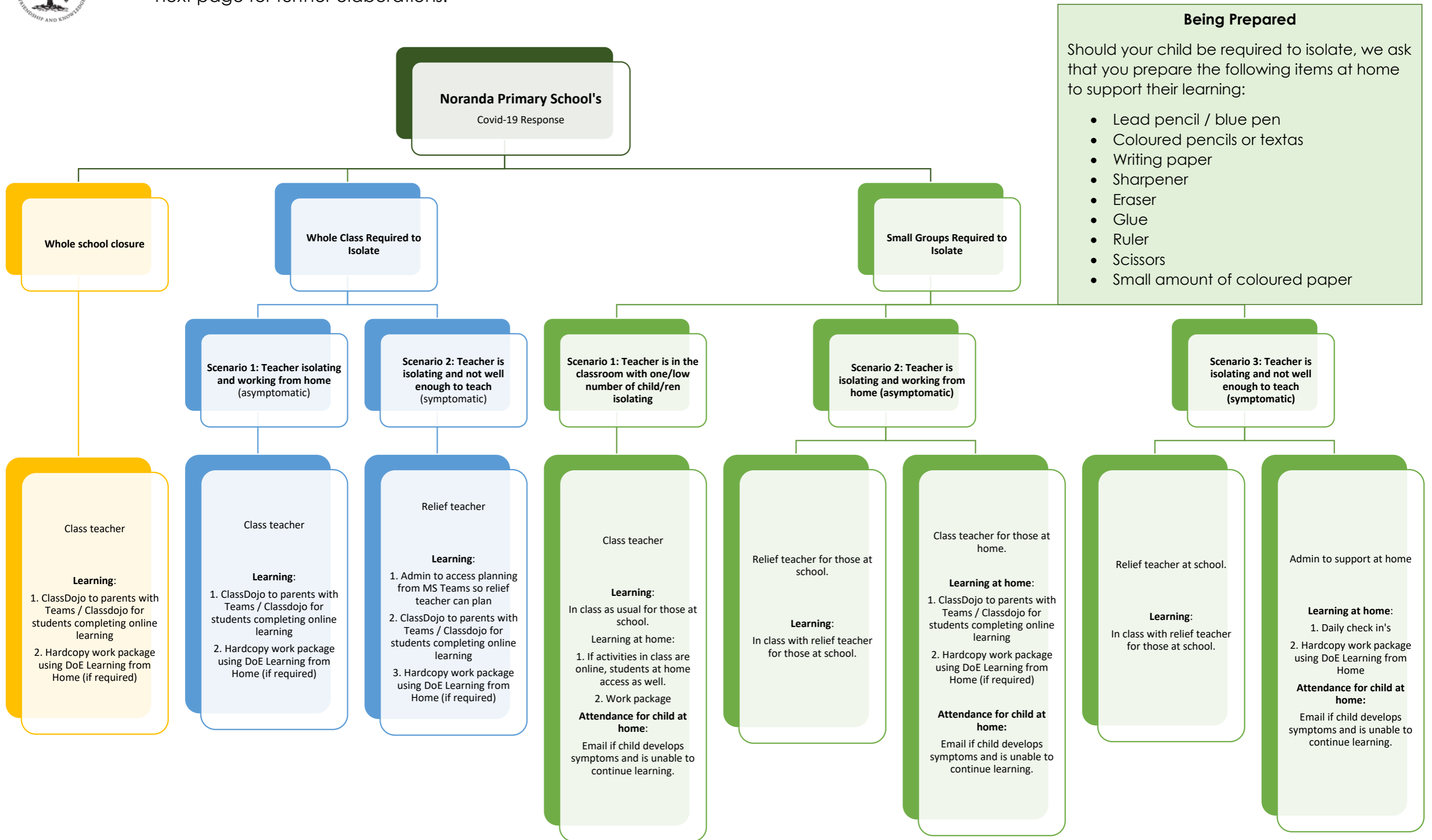




This document provides an overview of the actions Noranda Primary School staff will follow should we experience Covid-19 exposure. Please be mindful that in this evolving situation, our response may be adapted. We ask that you familiarise yourself with this flowchart and see the next page for further elaborations.





## Noranda Primary School Learning from Home Plan

**When the school administration is made aware that there is an unconfirmed positive case in the community, notification will be sent to families using the following channels:**

- A SMS message will be sent to all families informing them of an unconfirmed positive case in the school community (*please note; there is usually a delay between the school knowing about a case, before the Department of Health can confirm*)
- A ClassDojo post will be sent to all families to inform them of an unconfirmed case.
- A more specific course of action SMS message will be sent to the families of those students and staff who are deemed to be close contacts once advised by the Department of Health.
- A follow up ClassDojo post will be sent to all families based on the advice from the Department of Health to communicate the course of action taken.

### Whole School Closure

The classroom teacher will post on ClassDojo (parents) a suggested online learning timetable.

The Classroom teacher will assign tasks through Teams (Yr 2-6), Seesaw (Yr 1 & 2) ClassDojo Portfolios for (Year K/PP)

If you have difficulty accessing Teams or ClassDojo from home, please notify the classroom teacher through email or email the administration team at [noranda.ps@education.wa.edu.au](mailto:noranda.ps@education.wa.edu.au)

To get your child started with learning whilst the issue is looked at, we have included a few resources below;

[Learning from home - Department of Education \(www.education.wa.edu.au/learning-from-home\)](http://www.education.wa.edu.au/learning-from-home)

[Resources for Kindergarten students](#)  
[Resources for Pre-primary students](#)  
[Resources for Year 1 students](#)  
[Resources for Year 2 students](#)  
[Resources for Year 3 students](#)  
[Resources for Year 4 students](#)  
[Resources for Year 5 students](#)  
[Resources for Year 6 students](#)

Online Learning Plan Scenarios for Teaching and Learning

### Whole Class Required to Isolate

**Scenario 1: TEACHER IS ISOLATING AND WORKING FROM HOME (ASYMPTOMATIC)**

- If the teacher is isolating and working from home, the whole class will participate in online learning using ClassDojo, Teams or Seesaw.
- Your child will be provided with a few worksheets to get them started via ClassDojo. Please complete these to give the teacher time to ensure everything is up and running. Your child can also access Apps such as Mathletics, Reading Eggs etc
- Your teacher will make contact through Teams / ClassDojo when possible to provide you with a timetable to start online learning. Please note: The times may be different to the whole school online learning plan.
- The teacher will endeavour to schedule time/s for the whole class or small groups of children to get together through WebEx or Teams as a social check in. Our best intentions are to check-in online however this may not always be possible, especially for early childhood and junior primary.
- Specialist teachers will provide a document with learning activity options. Specialists will be available during the timetabled session to respond to emails and support your child.

**Scenario 2: TEACHER IS ISOLATING AND NOT WELL ENOUGH TO TEACH (SYMPTOMATIC)**

- If the teacher is isolating and not well, a relief teacher will be employed and the whole class will participate in online learning using Teams, ClassDojo, Seesaw and WebEx.
- Your child will be provided with a few worksheets to get them started for day 1. Please complete these to give the teacher time to ensure everything is up and running. We have also sent home a list of websites your child can access.
- Your relief teacher will make contact through ClassDojo when possible to provide you with a timetable for online learning. The times may be different to the whole school plan.
- The teacher will endeavour to schedule time/s for the whole class or small groups of children to get together through Teams and WebEx as a social check in. Our best intentions are to check-in online however this may not always be possible, especially for early childhood and junior primary.
- Specialist teachers will provide a document with learning activity options. Specialists will be available during the timetabled session to respond to emails and support your child.

### Small Groups Required to Isolate

**Scenario 1: TEACHER IS IN THE CLASSROOM WITH ONE CHILD ISOLATING**

- If the teacher is at school within the classroom, they will be teaching the remaining students face-to-face as per the usual school day.
- Students isolating at home will be provided with a few worksheets to get them started via ClassDojo. Students will then need to access the list of the links from Whole School Closure column. Students who can not access these will have a work package delivered.
- The teacher will email or phone to check on the student and answer any learning questions.
- The teacher will schedule a time for the whole class to get together through Teams or WebEx as a social check in.

**Scenario 2: TEACHER IS ISOLATING AND WORKING FROM HOME (ASYMPTOMATIC)**

- If the teacher is isolating and working from home and is well enough to teach, the teacher will focus on teaching those students who are also isolating at home and well enough to participate.
- Students isolating at home will be provided with a few worksheets to get them started. The isolating teacher will make contact through Teams, Seesaw with the isolating students. Students who can not access will have a work package delivered.
- A relief teacher will be employed to teach face-to-face the students who remain in the classroom.
- The two teachers will schedule a time for the whole class to get together through Teams / WebEx as a social check in.

**Scenario 3: TEACHER IS ISOLATING AND NOT WELL ENOUGH TO TEACH (SYMPTOMATIC)**

- If the teacher is isolating and not well, a relief teacher will be employed to teach the students who remain in the classroom.
- Students isolating at home will be provided with a few worksheets to get them started. Students will then need to access the list of websites via Teams / ClassDojo and the links from the Whole School Closure column. Students who can not access these will have a work package delivered.
- The Administration Team and relief teacher will call students isolating to check in and answer any learning questions.
- The relief teacher and Administration Team will schedule a time for the whole class to get together through Teams / WebEx as a social check in.

**Hard copy package**

Families who don't have access to online learning are to pick up a pack from a designated spot at the school or the Administration Team will deliver to your mailbox if you are already in isolation.

Families who don't have access to online learning are to pick up a pack from a designated spot at the school or the Administration Team will deliver to your mailbox if you are already in isolation.

Families who don't have access to online learning are to pick up a pack from a designated spot at the school or the Administration Team will deliver to your mailbox if you are already in isolation.

### My child is isolating and is unwell/has a positive COVID test

**When students are unwell they are not expected to complete online learning.**  
 During this time, please send the absence notice to [Noranda.PS@education.wa.edu.au](mailto:Noranda.PS@education.wa.edu.au) or call the Office on 9218 1550, preferably before 9am. We will mark them as unwell for the entire 7-day isolation period. However, when they are well enough to resume online learning please contact the school to change their Attendance Code.

### My child is isolating but is of good health and can participate in school work

The teacher will presume your child is well and participating in learning each day. If symptoms develop, and your child can not participate, please inform the teacher and school immediately via email so we can change their Attendance Code. During this time, please send the absence notice to [Noranda.PS@education.wa.edu.au](mailto:Noranda.PS@education.wa.edu.au)  
 When students are unwell they are not expected to complete online learning.

### What materials will the school supply?

We will be supplying each student with a few worksheets to get them started with learning from home whilst we ensure everything is up and running smoothly. Some teachers may also ask students to submit work online. There is also a list of websites that went out via your class teacher.

### What if I chose to keep my child home?

The school will provide learning from home for students who are isolating and identified as 'Close contacts' by the Health Department. If your child is well and has not been deemed a close contact, they are expected to be at school for face to face learning and home learning will not be provided.

**Should you require support for your child/ children, please contact the school on 9218 1550 to speak with an administration member or email [noranda.ps@education.wa.edu.au](mailto:noranda.ps@education.wa.edu.au)**